



# East Flathead Valley Study Fact Sheet

The Department of Natural Resources and Conservation (DNRC) have initiated an investigation of the water resources of the East Flathead Valley. The study focuses on the streams that are the inflows (Mooring Creek and Hemler Creek) and outflow (Blaine Creek) to Lake Blaine. The objective is to collect information necessary to understand groundwater-surface water connectivity and the water budget of Lake Blaine and associated creeks. The goal is to provide the citizens of Montana with access to watershed resource information so that sound science may be used to make decisions on proposed water use.



## Why Lake Blaine Watershed?

The Lake Blaine Watershed (see map on next page) was chosen for an investigation of surface water and groundwater resources because:

- Changes in land use, drought, and availability of water.
- The need for an evaluation of physical availability of surface water and groundwater on the east side of the Flathead Valley.

## What Is It?

This investigation is a 3 to 4 year inventory of water resources and uses in the Lake Blaine Watershed which began in April 2017. The primary goals are to:

- Evaluate hydraulic connection between groundwater and surface water.
- Measure streamflows and groundwater resources throughout the watershed.
- Develop a water budget of surface water and groundwater for the watershed.
- Estimate surface evaporation and transpiration from meteorological and remote sensing data.

## Is This a Study of Water Rights?

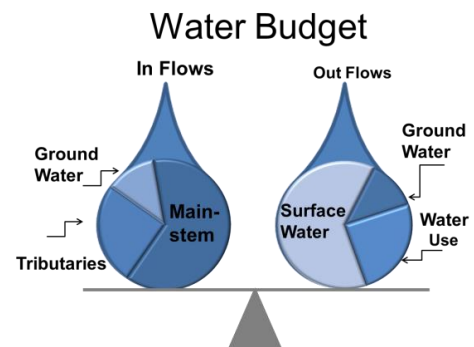
- No. While the study will be looking at water use, which by law requires a water right, the study will focus on quantifying water resources and uses to create a water budget for the watershed.

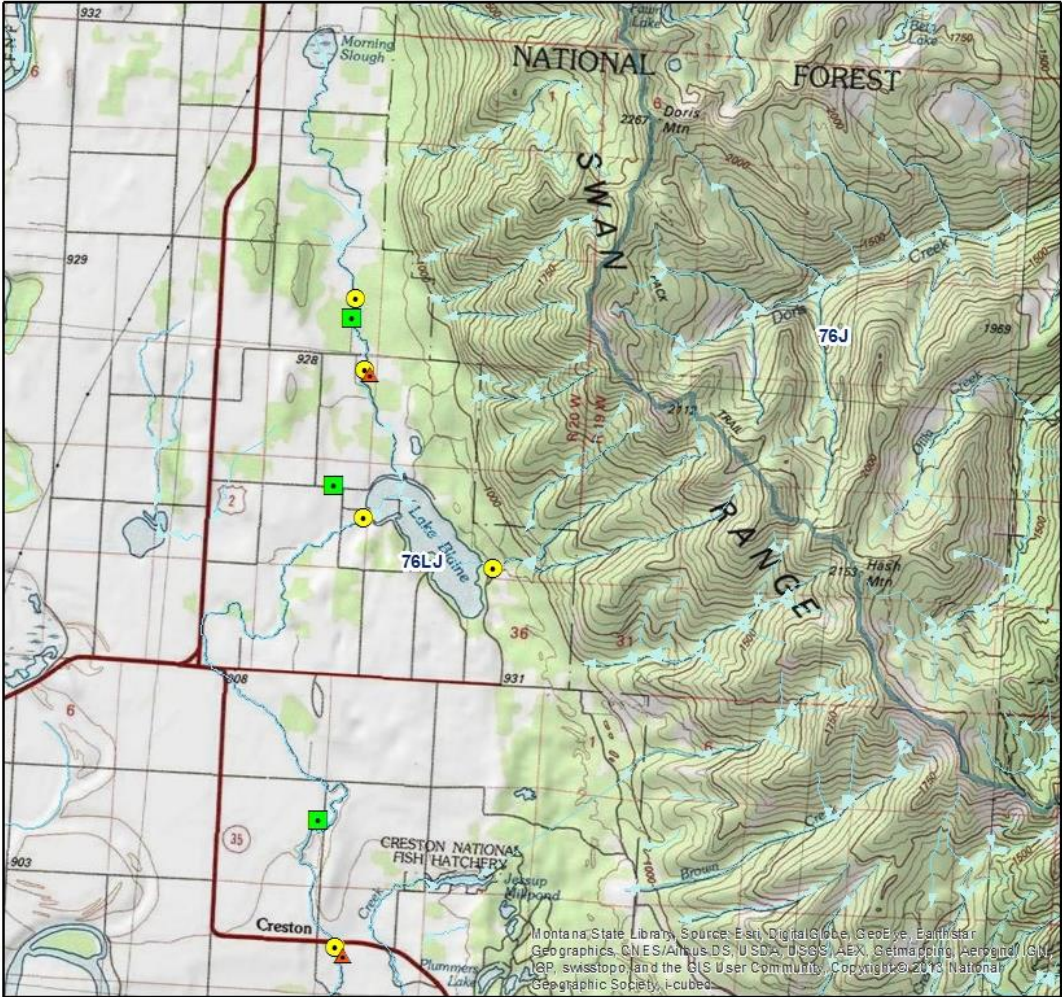
## What Are The Expected Outcomes?

- Assemble report(s) presenting current water resource conditions and future water availability to be cited in DNRC Technical Reports and incorporated into findings of fact associated with Preliminary Determination documents.
- Public access to stream and groundwater data online at the Data Center hosted by the Montana Bureau of Mines Geology (SWAMP).

## For More Information, please contact

Melissa Brickl, DNRC, 406-752-2702, [mbrickl@mt.gov](mailto:mbrickl@mt.gov)





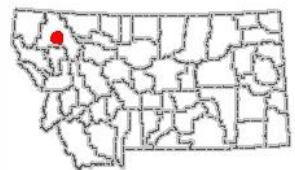
**Legend**

- Gaging Station
- Piezometer
- Monitoring Well



0 0.8 1.6 Miles

**Location Map**



Montana State Library Source: Esri, Digital Globe, GeoEye, Earthstar  
 GeoGraphics, CNES/Airbus DS, USDA, USGS, AeroX, GeoMaging, Aeroport, IGN  
 IGP, swisstopo, and the GIS User Community. Copyright © 2013 National  
 Geographic Society. i-cubed